

# Sonata 4 d-Moll

James Paisible

Hrsg. von: Franz-Rudolf Kuhnen  
(Fassung: 20040913-1)

## Grave

Measures 1-6 of the piece. The key signature is one flat (B-flat). The time signature is 2/4. The notation is in grand staff (treble and bass clefs). Fingerings are indicated by numbers 1-7 and sharps (#) for accidentals. Measure numbers 6# and 6 are written below the bass staff.

Measures 7-10 of the piece. Measure 7 is marked at the beginning of the system. Fingerings and accidentals are indicated. Measure numbers 6 and 4 are written below the bass staff.

Measures 11-14 of the piece. Measure 11 is marked at the beginning of the system. The notation includes slurs and various note values. Measure numbers 6 and 4 are written below the bass staff.

Measures 15-19 of the piece. Measure 15 is marked at the beginning of the system. The notation includes slurs and various note values. Measure numbers 4, 6, 7, 6, 7, 6, 6, #, and 4# are written below the bass staff.

Measures 20-23 of the piece. Measure 20 is marked at the beginning of the system. The notation includes slurs and various note values. Measure numbers 6, #, #, and 6 are written below the bass staff.

25

30

35

40

45

50

55

6

59

63

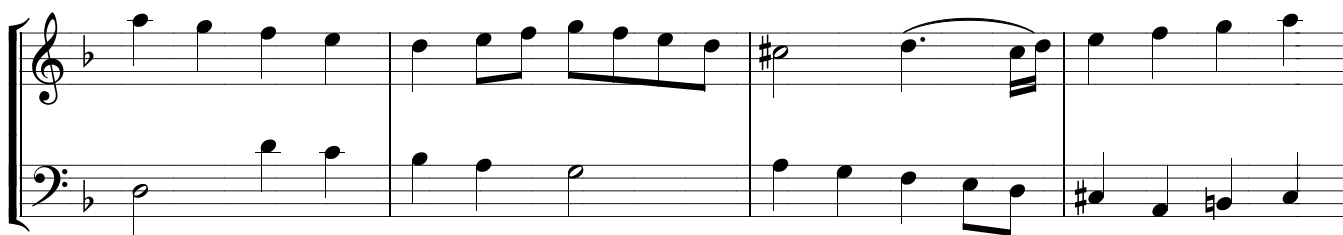
*Fine*

67

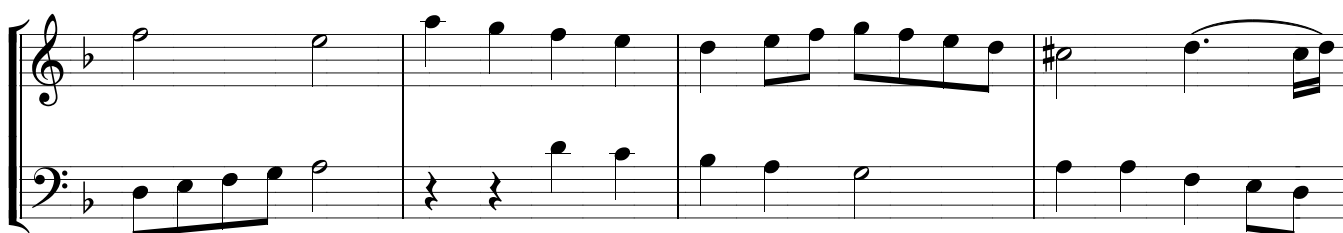
71

6 8

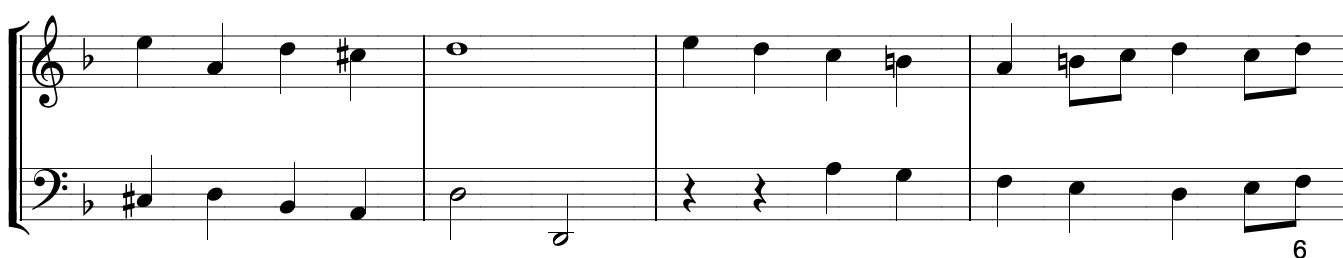
75



79



83



87



91

*D.S. al Fine*